



# PNEUMATIC FLANGER/ PUNCH

**OPERATOR'S MANUAL**  
Part No. 147050



OM147050

## SPECIFICATIONS

Punch Hole Size	.31" (8mm)
Capacity	18 ga
Air Inlet	1/4"
Hose Size	3/8" I.D.
Air Pressure	90 P.S.I.
Average Air Consumption	4 CF
Length	10"
Net Weight	3-1/2 lbs.



## IMPORTANT SAFETY INSTRUCTIONS



**WARNING:** Read all safety warnings, instructions, illustrations and specifications provided with this power tool. *Failure to follow all instructions listed below may result in electric shock, fire and/or serious injury.*

- Stay alert, watch what you are doing and use common sense when using a power tool. Do not use while tired or under the influence of drugs, alcohol or medication.
- Anticipate and be alert for sudden changes in motion during start up and operation of the tool.
- Never direct air at yourself or others.
- Maintain a balanced body position and secure footing.
- Operators and maintenance personnel must be physically able to handle the bulk, weight, and power of this tool.
- Repetitive work motions, awkward positions, and exposure to vibration can be harmful to hands and arms. If numbness, tingling, pain, or whitening of the skin occurs, stop using the tool and consult a physician.
- Dress Properly. Do not wear loose clothing or jewelry. Keep long hair, loose clothing and gloves from moving parts.
- Always use personal safety equipment. Wear Safety glasses to protect eyes from fling debris. Proper hearing protection must be used when tool is in use.

### **Work Area**

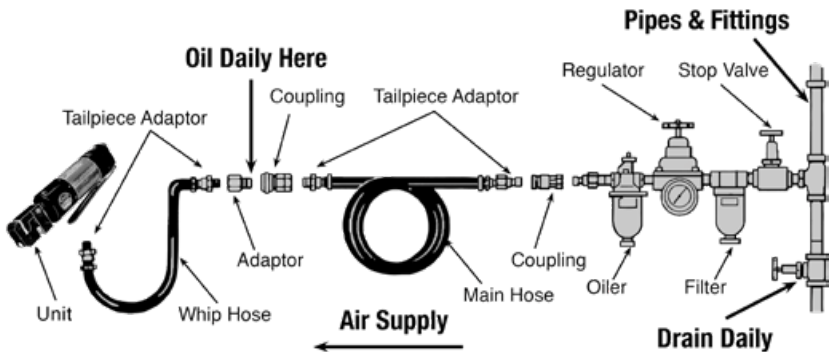
- Always operate, inspect, and maintain this tool in accordance with American National Standards Institute Safety Code of Portable Air Tools (ANSI B186.1) and any other applicable safety codes and regulations.
- Keep your work area clean and well lit.
- Do not operate tools in an explosive atmosphere. Sparks may ignite fumes or dust.
- Do not lubricate the tool with flammable or volatile liquids.
- Keep bystanders away while operating power tools.
- Slips/trips/falls are a major cause of serious injury or death. Be aware of excess hose left on the work floor.
- Whip hoses can cause serious injury. Always check for damaged, frayed, or loose hoses and fittings, and replace immediately. Do not use quick detach couplings on tool. See instructions for correct set-up.

## **Tool Use and Care**

- Place the tool on the work bench before starting the tool and use a support handle or other method to secure and support the work piece to the platform.
- Do not force the tool.
- Do not carry the tool by the hose.
- Do not force the tool beyond its rated capacity.
- Do not remove any labels and replace damaged labels.
- Disconnect the air supply before making any adjustments, changing accessories, performing any inspection, maintenance, tool cleaning, or storing the tool.
- Use only accessories recommended by Blaire Equipment Company.
- When using a tool that is designed to have a guard, the guard should be in place to offer protection from flying debris, grinding residue, or sparks.
- Do not leave the tool unattended.

## **OPERATING INSTRUCTIONS**

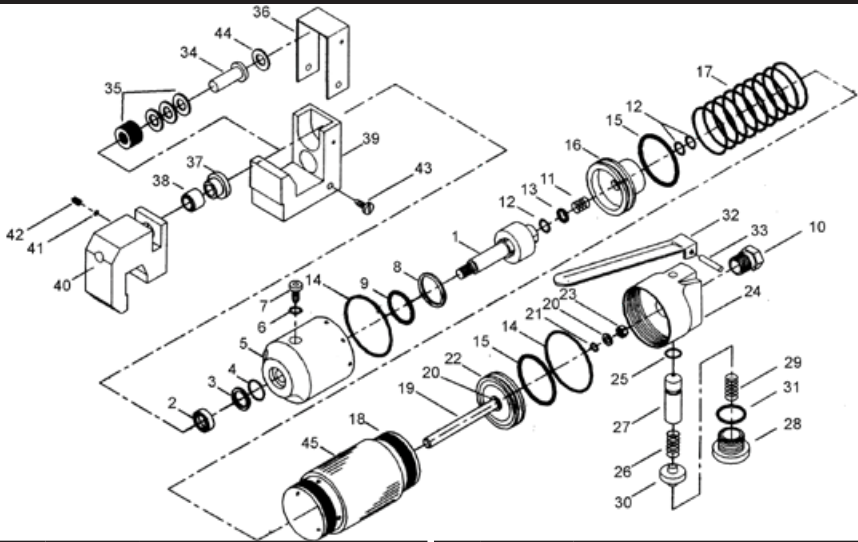
### **Air Supply Setup and Connection**



### **Air Supply**

- For safety, top performance, and maximum durability of parts, operate this tool at 90 psig 6.2 bar max air pressure with 3/8" diameter air supply hose. Higher pressure and unclean air will shorten tool life and may create hazardous conditions.
- Water in the air line will cause damage to the tool. Drain the air tank daily and clean the air inlet filter screen weekly.
- Line pressure should be increased to compensate for unusually long air hoses (over 25 feet). Minimum hose diameter should be 1/4" I.D. and fittings should have the same inside dimensions.

# BREAKDOWN



#	Part #	Description	#	Part #	Description
1	83701A	Piston	24	83724	Air Valve Body
2	83702	Packing	25	83725	O-Ring
3	83703	Back-Up Ring	26	83726	Spring
4	83704	O-Ring	27	83727	Air Valve
5	83705	Cylinder	28	83728	Plug
6	83706	O-Ring	29	83729	Spring
7	83707	Oil Plug	30	83730	Valve Cover
8	83708	Back-Up Ring	31	83731	O-Ring
9	83709	O-Ring	32	83732	Trigger
10	83710	Air Inlet	33	83733	Pin
11	83711	Spring	34	83734A	Punch
12	83712	O-Ring	35	278CSS	Cub Spring Set
13	83713	Back-Up Ring	36	83736A	Cover
14	83714	O-Ring	37	83737A	Guide Sleeve
15	83715	O-Ring	38	83738A	Punching Die
16	83716	Piston	39	83739A	Anvil Bed
17	83717	Spring	40	83740A	Punching Die Bed
18	83718	Cylinder	41	83741	Packing
19	83719	Piston Rod	42	83742	Screw
20	83720	Washer	43	83743	Screw
21	83721	O-Ring	44	83744A	Washer
22	83722	Piston	45	83745	Red Plastic Wrap
23	83723	Lock Nut			

# PARTS LIST

#	Part #	Description	Qty.
1	<b>83701A</b>	Piston	1
2	<b>83702</b>	Packing	1
3	<b>83703</b>	Back-Up Ring	1
4	<b>83704</b>	O-Ring	1
5	<b>83705</b>	Cylinder	1
6	<b>83706</b>	O-Ring	1
7	<b>83707</b>	Oil Plug	1
8	<b>83708</b>	Back-Up Ring	1
9	<b>83709</b>	O-Ring	1
10	<b>83710</b>	Air Inlet	1
11	<b>83711</b>	Spring	1
12	<b>83712</b>	O-Ring	3
13	<b>83713</b>	Back-Up Ring	1
14	<b>83714</b>	O-Ring	2
15	<b>83715</b>	O-Ring	2
16	<b>83716</b>	Piston	1
17	<b>83717</b>	Spring	1
18	<b>83718</b>	Cylinder	1
19	<b>83719</b>	Piston Rod	1
20	<b>83720</b>	Washer	2
21	<b>83721</b>	O-Ring	1
22	<b>83722</b>	Piston	1
23	<b>83723</b>	Lock Nut	1

#	Part #	Description	Qty.
24	<b>83724</b>	Air Valve Body	1
25	<b>83725</b>	O-Ring	1
26	<b>83726</b>	Spring	1
27	<b>83727</b>	Air Valve	1
28	<b>83728</b>	Plug	1
29	<b>83729</b>	Spring	1
30	<b>83730</b>	Valve Cover	1
31	<b>83731</b>	O-Ring	1
32	<b>83732</b>	Trigger	1
33	<b>83733</b>	Pin	1
34	<b>83734A</b>	Punch	1
35	<b>278CSS</b>	Cub Spring Set	1
36	<b>83736A</b>	Cover	1
37	<b>83737A</b>	Guide Sleeve	1
38	<b>83738A</b>	Punching Die	1
39	<b>83739A</b>	Anvil Bed	1
40	<b>83740A</b>	Punching Die Bed	1
41	<b>83741</b>	Packing	1
42	<b>83742</b>	Screw	1
43	<b>83743</b>	Screw	1
44	<b>83744A</b>	Washer	1
45	<b>83745</b>	Red Plastic Wrap	1

## **COMMERCIAL / INDUSTRIAL LIMITED WARRANTY**

Blair Equipment Company warrants its Portable Magnetic Drills and Tornado II Paint Shakers for two (2) years and other products for ninety (90) days from date of purchase against defects due to faulty material or workmanship and will repair or replace (at its option) without charge any items returned. This warranty is void if the item has been damaged by accident or unreasonable use, neglect, improper service, or other causes not arising out of defects in material or workmanship. No other expressed warranty is given or authorized. Blair Equipment Company disclaims any implied warranty of Merchantability or fitness for any period beyond the expressed warranty and shall not be liable for incidental or consequential damages. Some states do not allow exclusion of incidental or consequential damages or limitation on how long an implied warranty lasts and, if the law of such a state governs your purchase, the above exclusion and limitation may not apply to you. This warranty gives you specific legal rights and you may also have other rights which vary from state to state.

To obtain warranty service, return the item(s), transportation prepaid to your nearest Factory Authorized Warranty Service Center, or to Blair Equipment Company, 3001 Hougen Drive, Swartz Creek, MI 48473.

This warranty is in lieu of any other warranty, expressed or implied, including any warranty of merchantability or fitness for a particular purpose.

Photographs and Specifications shown are accurate in detail at time of printing. Manufacturer reserves the right to make improvements and modifications without prior notice. Blair and Rotabroach are proprietary trademarks of Blair Equipment Company.

## **AUTHORIZED WARRANTY REPAIR CENTER**

**For Warranty Service, return all products, transportation prepaid to:**

**Blair Equipment Company  
3001 Hougen Drive  
Swartz Creek, Michigan 48473**



### **Blair Equipment Company**

3001 Hougen Drive • Swartz Creek, MI 48473

Phone (810) 635-7111

[www.blairequipment.com](http://www.blairequipment.com)

© 2024 Blair Equipment Company